

Visitors to the UNM Physical Therapy Classrooms

Address: 1001 Stanford Dr. NE Albuquerque, NM 87106

(For rideshares or taxis: 2400 Tucker Ave NE Albuquerque, NM 87106, the Family Practice Center, gets you on the correct side of Domenici)

From I-25 Southbound, exit at Lomas. **From Lomas, go east to Yale. Turn Left on Yale. Turn Right on Tucker.** You will be on the North side of the Medical Campus. To the Right is a large parking lot, marked "M" Lot. Farther east to the Left is the "L" lot. Do NOT park in the Court of Appeals parking lot.

From the Menaul and University area, go South on University to Lomas and follow the underlined instructions above.

From the Coronado/Winrock Mall area, get on to **I-40 West** and exit at **University**. Go South on University to Lomas and follow the underlined instructions above.

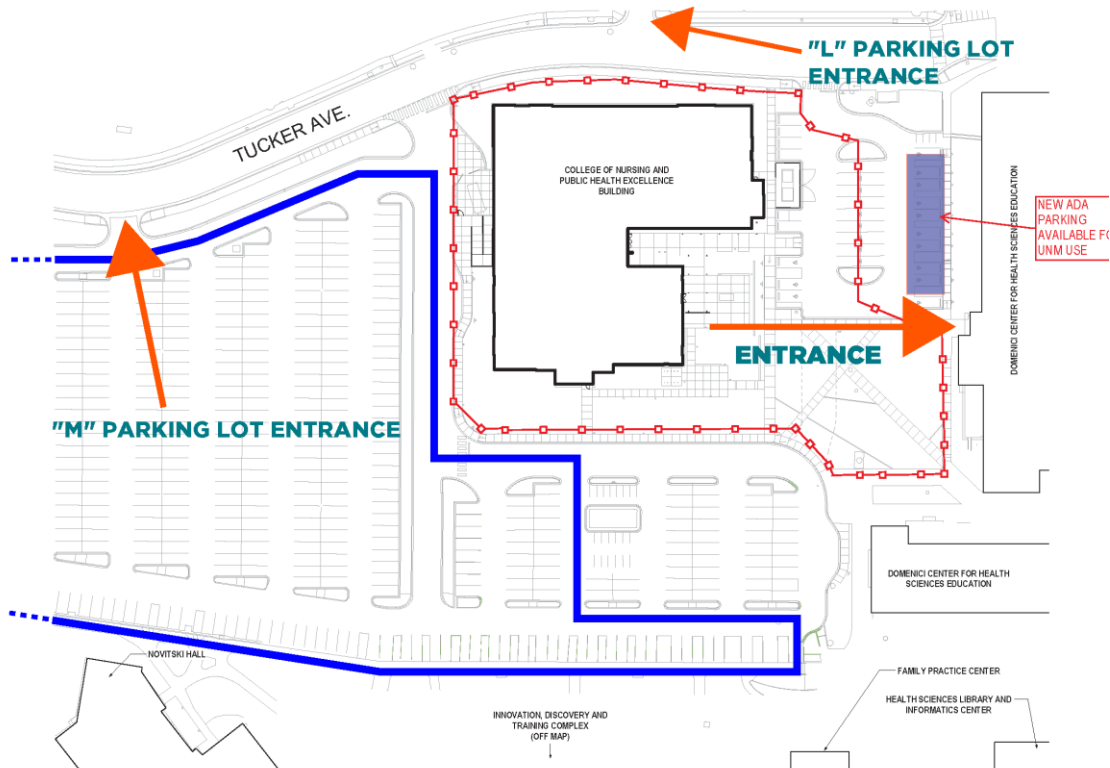
From the Airport, take **I-25 North**, and exit East on Lomas. Follow the underlined instructions above.

The interactive map can be accessed directly at <https://map.concept3d.com/?id=1984>, and more map info as well as the main link to the map are here: <https://css.unm.edu/campus-maps/index.html>.

Parking Instructions:

In the "M" Lot (indicated in blue), you may park at any unmetered, unmarked parking space, or ADA spaces with a state-issued ADA placard or license plate. Parking is free on the weekends. You can also use the "L" Lot.

Walk to the east end of the parking lot to the Domenici Center NORTH WING and enter through the **west** entrance.
Wing,



Directions to: UNM North Campus Domenici Health Education Building– Physical Therapy Classrooms
1001 Stanford Dr. NE 87106– Elevator Access



1. Proceed toward the Domenici North Wing, west entrance (indicated by arrow).

2. Enter building through west entrance double doors.



3. Proceed through inner doors, turn right and go down the hall for elevator access to the second floor (left-hand side).

4. When you reach the second floor, take a right and continue down the hall past the sitting areas, restrooms and water fountains.



5. Continue to the end of the hall, the classrooms are the last two rooms on the left-hand side.

6. PT classrooms 2750 (south) and 2760 (north).

7. If you need assistance, please call the PT administrative office at 505-272-5479 or 505-272-6956.